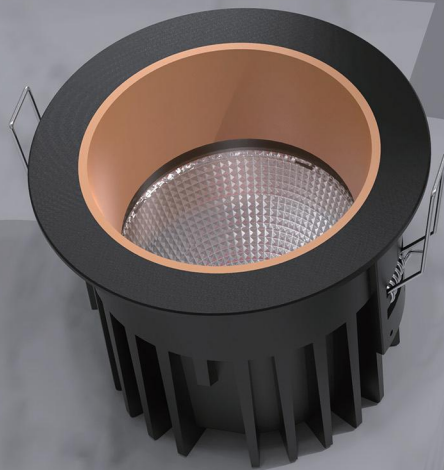
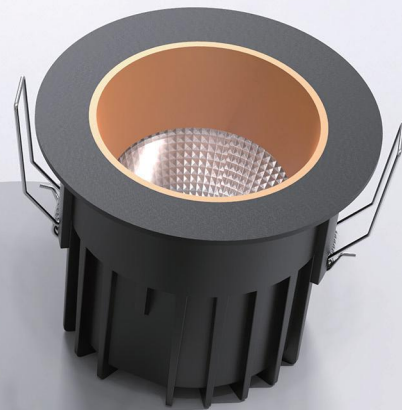


LESS SERIES



Less Series - Recessed Downlight



KT6955

Light distribution

3000K CRI 90

KT6955		21°
h (m)	E0° (lx)	Φ (m)
1	7495	0.37
2	1874	0.75
3	832.8	1.12
4	468.4	1.50
5	299.8	1.87



KT6956

Light distribution

3000K CRI 90

KT6956		31°
h (m)	E0° (lx)	Φ (m)
1	7281	0.55
2	1820	1.10
3	808.9	1.66
4	455.0	2.21
5	291.2	2.76



KT6957

Light distribution

3000K CRI 90

KT6957		32°
h (m)	E0° (lx)	Φ (m)
1	4310	0.56
2	1077	1.13
3	478.9	1.69
4	269.4	2.26
5	172.4	2.82



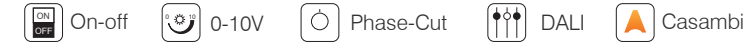
KT6958

Light distribution

3000K CRI 90

KT6958		31°
h (m)	E0° (lx)	Φ (m)
1	7281	0.55
2	1820	1.10
3	808.9	1.66
4	455.0	2.21
5	291.2	2.76

Control Type



Luminaire specifications

Mode	Power	Lumen	CCT	BA.	Cutout	Light Source	Driver	CRI
KT6955	20W	1400	3000K	18/26/38°	Φ117	Citizen	TRIDONIC	90
KT6956	30W	2100	3000K	18/30/60°	Φ126	Citizen	TRIDONIC	90
KT6957	20W	1400	3000K	18/30/60°	Φ93	Citizen	TRIDONIC	90
KT6958	30W	2100	3000K	18/30/60°	Φ103	Citizen	TRIDONIC	90

All values are measured at 220V(+/- 10%).
Color temperature range 2700K/3000K/3500K/4000K/5000K/6000K/Tunable White.
Colour Rendering Index (CRI) CRI80, CRI90
Die-casting Aluminum

Front Ring Finishing color

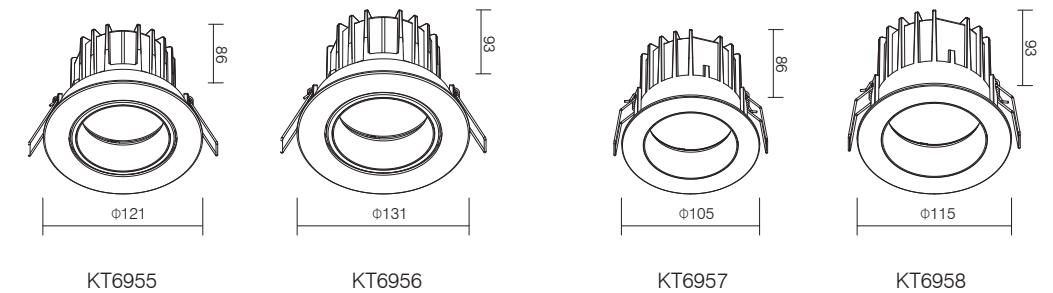


Replaceable Accessories



Frame Finishing color

- Black RAL9005
- Grey RAL9006
- White RAL9016



Remark: ● Technical information may change, please refer to the datasheet.