

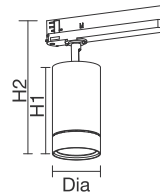
TRACK LIGHT



SMRITI FAMILY

For 3 phase track with integrated adapter driver

TECH. DRAWING



SMRITY FAMILY

LED  220-240 V IP20 CITIZEN PHILIPS

	W	LUM	CCT	BEAM	CRI	DIA	H1	H2
MHT8856	20	1611	3000K	40°	80	Φ81.5mm	116mm	203mm
MHT8857	32	2759	3000K	40°	80	Φ81.5mm	150.5mm	237.5mm
MHT8858	42	3774	3000K	40°	80	Φ81.5mm	195mm	282mm

OPTIONS

Color RAL 9016 RAL 9006 RAL 9005
 Beam Angle 15° 24° 40° 60°
 CCT 2700K 3000K 4000K
 CRI 80 90

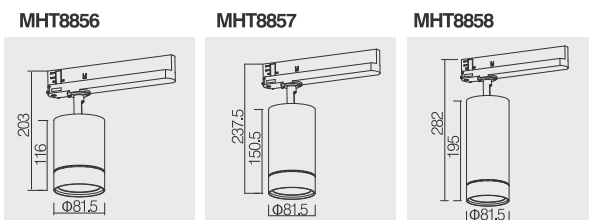
SOURCE OPTION

OSRAM

ADAPTOR OPTION

GLOBAL / OSRAM

REFERENCE DRAWING



TRACK LIGHT



LESS FAMILY-ZOOMER

OPTIONS

- Color ○ RAL 9016 ○ RAL 9006 ○ RAL 9005
- CCT ○ 2700K ○ 3000K ○ 4000K
- CRI ○ 80 ○ 90

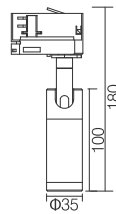
SOURCE OPTION /

DRIVER OPTION /

LED  220-240 V IP20 CREE AREEK

	W	LUM	CCT	BEAM	CRI
MHT8867	3	110	3000K	8-25°	80

TECH. DRAWING size in mm



LESS FAMILY-TILTABLE & ROTATABLE

OPTIONS

- Color ○ RAL 9016 ○ RAL 9006 ○ RAL 9005
- Beam Angle ○ 20° ○ 30° ○ 40° ○ 50° ○ 60° ○ 100°
- CCT ○ 2700K ○ 3000K ○ 4000K
- CRI ○ 80 ○ 90

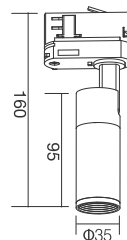
SOURCE OPTION /

DRIVER OPTION /

LED  220-240 V IP20 CREE AREEK

	W	LUM	CCT	BEAM	CRI
MHT8883	3	116	3000K	20°	80

TECH. DRAWING size in mm

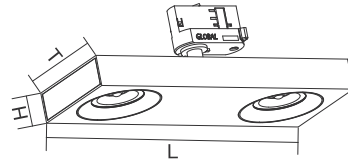


TRACK LIGHT



ASTREA LENS CHANGEABLE TRACK LIGHT

TECH. DRAWING



ASTREA FAMILY

LED  220-240 V  IP20  CITIZEN  OSRAM

	W	LUM	CCT	BEAM	CRI	L	T	H
MHT8871	2x15	500-1400	3000K	30°	80	280mm	100mm	30mm

OPTIONS

Color RAL 9016 RAL 9006 RAL 9005

CCT 2700K 3000K 4000K

CRI 80 90

SOURCE OPTION OSRAM / Bridgelux

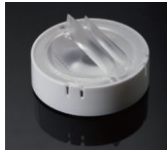
DRIVER OPTION /

LENS OPTIONS

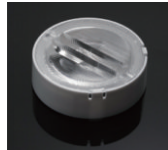
RONDA-WAS2-C



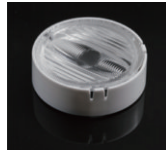
RONDA-WAS-C



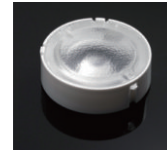
RONDA-ZT45-C



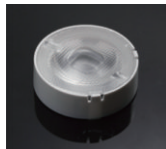
RONDA-O-C



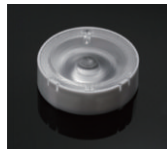
RONDA-WW-C



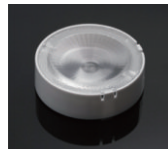
RONDA-REC-60-C



RONDA-W-C



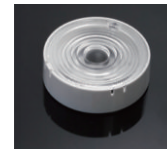
RONDA-WWW-C



RONDA-REC-C



RONDA-S-C



TRACK LIGHT



LESS FAMILY

For 3 phase track with DALI control

OPTIONS

Color	<input type="radio"/> RAL 9016	<input type="radio"/> RAL 9006	<input type="radio"/> RAL 9005
Beam Angle	<input type="radio"/> 20°	<input type="radio"/> 40°	<input type="radio"/> 60°
CCT	<input type="radio"/> 2700K	<input type="radio"/> 3000K	<input type="radio"/> 4000K
CRI	<input type="radio"/> 80	<input type="radio"/> 90	

SOURCE OPTION

OSRAM / BRIDGELUX

DRIVER OPTION

/

LED



220-240 V

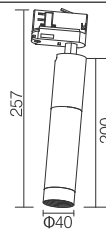
IP20

CITIZEN

OSRAM

	W	LUM	CCT	BEAM	CRI
MHT8882A - DALI	12	1020	3000K	40°	80

TECH. DRAWING size in mm



LESS FAMILY- TILTABLE & ROTATABLE

OPTIONS

Color	<input type="radio"/> RAL 9016	<input type="radio"/> RAL 9006	<input type="radio"/> RAL 9005
Beam Angle	<input type="radio"/> 20°	<input type="radio"/> 40°	<input type="radio"/> 60°
CCT	<input type="radio"/> 2700K	<input type="radio"/> 3000K	<input type="radio"/> 4000K
CRI	<input type="radio"/> 80	<input type="radio"/> 90	

SOURCE OPTION

/

DRIVER OPTION

KEGU

LED



220-240 V

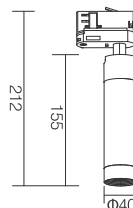
IP20

Bridgelux

OSRAM

	W	LUM	CCT	BEAM	CRI
MHT8882A	8	358	3000K	40°	80

TECH. DRAWING size in mm



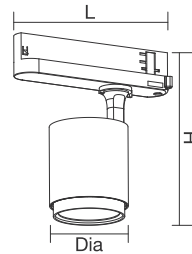
TRACK LIGHT



CAN FAMILY

For 3 phase track with integrated adapter driver

TECH. DRAWING



CAN FAMILY

LED  220-240 V IP20 OSRAM PHILIPS

	W	LUM	CCT	BEAM	CRI	DIA	H	L
MHT8874	15	1406	3000K	40°	80	Φ77.5mm	170.5mm	165mm
MHT8875	30	2714	3000K	40°	80	Φ89mm	179.5mm	220mm

OPTIONS

- Color RAL 9016 RAL 9006 RAL 9005
- Beam Angle MHT8874 15° 24° 40°
- Beam Angle MHT8875 16° 24° 40° 60°
- CCT 2700K 3000K 4000K
- CRI 80 90

SOURCE OPTION

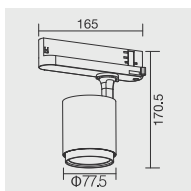
EVERCORE / CITIZEN / Bridgelux

DRIVER OPTION

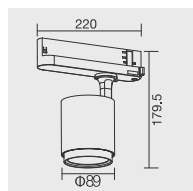
GLOBAL / OSRAM

REFERENCE DRAWING

MHT8874



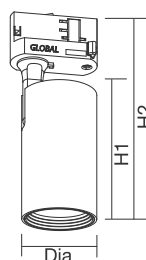
MHT8875





LESS FAMILY TILTABLE & ROTATABLE TRACK LIGHT

TECH. DRAWING



LESS FAMILY

LED  220-240 V 

	W	LUM	CCT	BEAM	CRI	SOURCE	DRIVER	DIA	H1	H2
MHT8877	30	3299	3000K	36°	80	ORSAM	ORSAM	Ø81mm	148mm	213mm
MHT8880	20	2042	3000K	38°	80	ORSAM	ORSAM	Ø76mm	145mm	211mm
MHT8881	12	887	3000K	36°	80	Bridgelux	KEGU	Ø60mm	109mm	175mm

OPTIONS

- Color RAL 9016 RAL 9006 RAL 9005
 Beam Angle 18° 24° 38°
 Beam Angle 15° 24° 36°
 CCT 2700K 3000K 4000K
 CRI 80 90

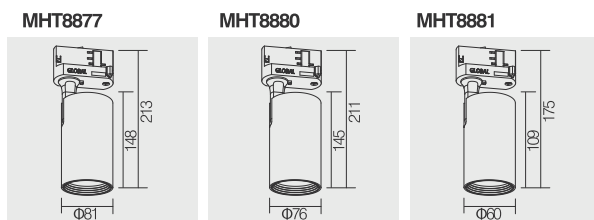
SOURCE OPTION

EVERCORE / Bridgelux / CITIZEN

DRIVER OPTION

HEP / AREEK / TRIDONIC

REFERENCE DRAWING

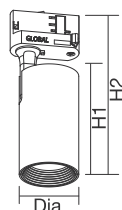


TRACK LIGHT



LESS FAMILY TILTABLE & ROTATABLE TRACK LIGHT

TECH. DRAWING



LESS FAMILY

LED  220-240 V 

	W	LUM	CCT	BEAM	CRI	SOURCE	DRIVER	DIA	H1	H2
MHT8877A	30	2902	3000K	40°	80	ORSAM	ORSAM	Ø81mm	175mm	241mm
MHT8880A	20	1901	3000K	40°	80	ORSAM	ORSAM	Ø76mm	165mm	213mm
MHT8881A	12	825	3000K	38°	80	Bridgelux	KEGU	Ø60mm	109mm	175mm

OPTIONS

Color RAL 9016 RAL 9006 RAL 9005
 Beam Angle 16° 24° 40° 60°
 Beam Angle 15° 24° 40°
 Beam Angle 15° 25° 38° 60°
 CCT 2700K 3000K 4000K
 CRI 80 90

SOURCE OPTION

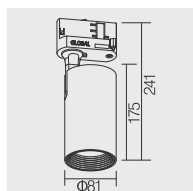
Bridgelux / CITIZEN

DRIVER OPTION

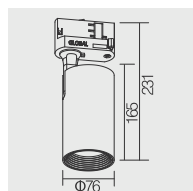
TRIDONIC / AREEK

PICTURES

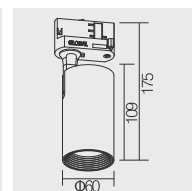
MHT8877A



MHT8880A



MHT8881A

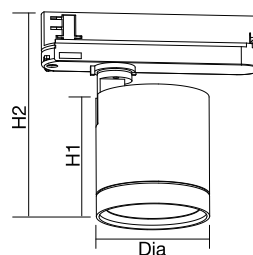




CAN FAMILY

For 3 phase track with integrated adapter driver

TECH. DRAWING



CAN FAMILY- GIMBAL TRACK LIGHT

LED  220-240 V  IP20  Bridgelux  PHILIPS

	W	LUM	CCT	BEAM	CRI	DIA	H1	H2
MHT8893	7	560	3000K	24°	80	Ø45mm	65mm	128mm
MHT8892	12	960	3000K	24°	80	Ø60mm	67mm	130mm
MHT8891	18	1440	3000K	24°	80	Ø70mm	77mm	140mm
MHT8890	30	2400	3000K	24°	80	Ø85mm	92mm	155mm

OPTIONS

Color RAL 9016 RAL 9006 RAL 9005
 Beam Angle 15° 24° 36° 60°
 Beam Angle MHT8890 10° 15° 24° 36° 60°
 CCT 2700K 3000K 4000K
 CRI 80 90

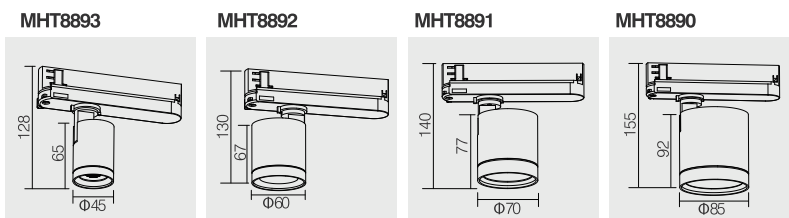
SOURCE OPTION

CITIZEN

DRIVER OPTION

GLOBAL / OSRAM

REFERENCE DRAWING



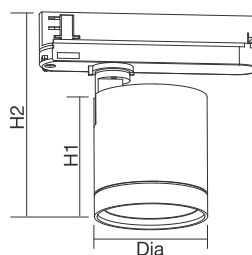
TRACK LIGHT



CAN FAMILY

For 3 phase track with integrated adapter driver

TECH. DRAWING



CAN FAMILY- GIMBAL TRACK LIGHT

LED  220-240 V IP20 Bridgelux PHILIPS

	W	LUM	CCT	BEAM	CRI	DIA	H1	H2
MHT8893A	7	560	3000K	20°	80	Ø45mm	65mm	128mm
MHT8892A	12	960	3000K	25°	80	Ø60mm	67mm	130mm
MHT8891A	18	1440	3000K	20°	80	Ø70mm	90mm	153mm
MHT8890A	30	2400	3000K	24°	80	Ø85mm	108mm	170mm

OPTIONS

Color RAL 9016 RAL 9006 RAL 9005
 Beam Angle 20° 40° 60°
 Beam Angle 15° 25° 38° 60°
 Beam Angle 16° 24° 40° 60°
 CCT 2700K 3000K 4000K
 CRI 80 90

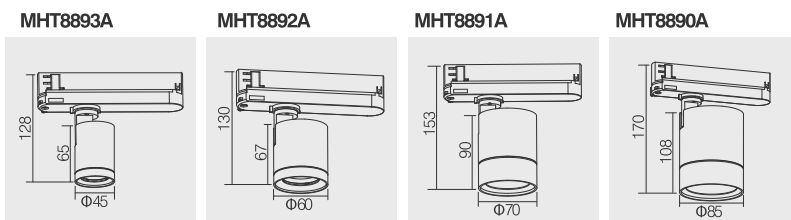
SOURCE OPTION

CITIZEN

DRIVER OPTION

GLOBAL / OSRAM

REFERENCE DRAWING



TRACK LIGHT



LED  220-240 V IP20 Bridgelux PHILIPS

	W	LUM	CCT	BEAM	CRI
MHT8890B	20	1600	3000K	30°	80

CAN FAMILY

For 3 phase track with integrated adapter driver

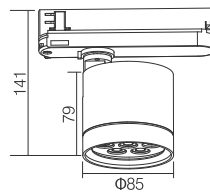
OPTIONS

Color	<input type="radio"/> RAL 9016	<input type="radio"/> RAL 9006	<input type="radio"/> RAL 9005
Beam Angle	<input type="radio"/> 10°	<input type="radio"/> 15°	<input type="radio"/> 25° <input type="radio"/> 30°
CCT	<input type="radio"/> 2700K	<input type="radio"/> 3000K	<input type="radio"/> 4000K
CRI	<input type="radio"/> 80	<input type="radio"/> 90	

SOURCE OPTION /

DRIVER OPTION GLOBAL / OSRAM

TECH. DRAWING size in mm



LED  220-240 V IP20 CREE PHILIPS

	W	LUM	CCT	BEAM	CRI
MHT8891B	10	800	3000K	30°	80

CAN FAMILY

For 3 phase track with integrated adapter driver

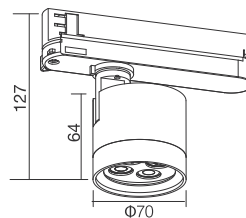
OPTIONS

Color	<input type="radio"/> RAL 9016	<input type="radio"/> RAL 9006	<input type="radio"/> RAL 9005
Beam Angle	<input type="radio"/> 10°	<input type="radio"/> 15°	<input type="radio"/> 25° <input type="radio"/> 30°
CCT	<input type="radio"/> 2700K	<input type="radio"/> 3000K	<input type="radio"/> 4000K
CRI	<input type="radio"/> 80	<input type="radio"/> 90	

SOURCE OPTION /

DRIVER OPTION GLOBAL / OSRAM

TECH. DRAWING size in mm

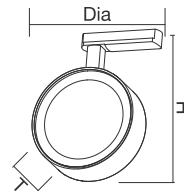


TRACK LIGHT



OLSO FAMILY TILTABLE & ROTATABLE TRACK LIGHT

TECH. DRAWING



OLSO FAMILY

LED  AC 220-240 V IP20 ZMO

	W	LUM	CCT	BEAM	CRI	DIA	H	T
KTK1 8834	10	650	3000K	30°	80	Φ90mm	125mm	30mm
KTK1 8835	15	950	3000K	30°	80	Φ105mm	140mm	32mm
KTK1 8836	20	1200	3000K	30°	80	Φ120mm	155mm	33mm

OPTIONS

Color ○ RAL 9016 ○ RAL 9006 ○ RAL 9005
 Beam Angle ○ 10° ○ 20° ○ 30°
 CCT ○ 2700K ○ 3000K ○ 4000K
 CRI ○ 80 ○ 90

SOURCE OPTION	LUMENS
DRIVER OPTION	/

REFERENCE DRAWING



TRACK LIGHT



MHT103- TILTABLE & ROTATABLE

OPTIONS

Color	<input type="radio"/> RAL 9016	<input type="radio"/> RAL 9006	<input type="radio"/> RAL 9005
CCT	<input type="radio"/> 2700K	<input type="radio"/> 3000K	<input type="radio"/> 4000K
CRI	<input type="radio"/> 80	<input type="radio"/> 90	

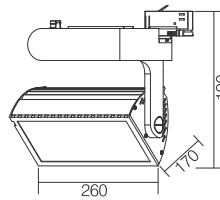
SOURCE OPTION EDISON

DRIVER OPTION OSRAM

LED  220-240 V IP20 CREE PHILIPS

	W	LUM	CCT	BEAM	CRI
MHT103	40	3300	3000K	90°	80

TECH. DRAWING size in mm




CONE FAMILY- TILTABLE & ROTATABLE

OPTIONS

Color	<input type="radio"/> RAL 9016	<input type="radio"/> RAL 9006	<input type="radio"/> RAL 9005
CCT	<input type="radio"/> 2700K	<input type="radio"/> 3000K	<input type="radio"/> 4000K
CRI	<input type="radio"/> 80	<input type="radio"/> 90	

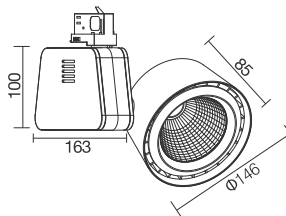
SOURCE OPTION /

DRIVER OPTION AREEK / TRIDONIC / OSRAM

LED  220-240 V IP20 CITIZEN LIFUD

	W	LUM	CCT	BEAM	CRI
MHT8583	40	3200	3000K	25°	80

TECH. DRAWING size in mm

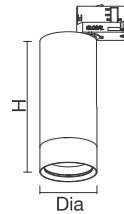


TRACK LIGHT



PIPE FAMILY TILTABLE & ROTATABLE TRACK LIGHT

TECH. DRAWING



PIPE FAMILY

LED  AC 220-240 V IP20 LUMENS

	W	LUM	CCT	BEAM	CRI	DIA	H
MHT8596A	20	1500	3000K	38°	80	Φ76mm	185mm
MHT8596B	30	2200	3000K	38°	80	Φ76mm	200mm
MHT8597	40	3000	3000K	40°	80	Φ86mm	220mm

OPTIONS

Color RAL 9016 RAL 9006 RAL 9005

CCT 2700K 3000K 4000K

CRI 80 90

SOURCE OPTION

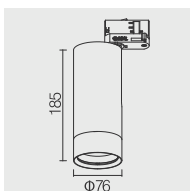
EDISON

DRIVER OPTION

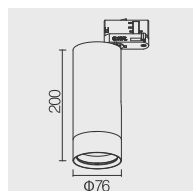
/

REFERENCE DRAWING

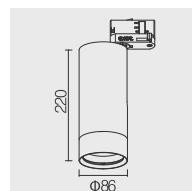
MHT8596A



MHT8596B



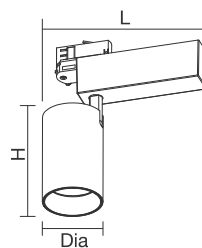
MHT8597





LESS FAMILY TILTABLE & ROTATABLE TRACK LIGHT

TECH. DRAWING



LESS FAMILY

LED  220-240 V IP20 CITIZEN OSRAM

	W	LUM	CCT	BEAM	CRI	DIA	H	L
MHT8830	20	1400	3000K	38°	80	Ø76mm	213mm	197mm
MHT8831	30	2100	3000K	30°	80	Ø89mm	223mm	211mm

OPTIONS

Color RAL 9016 RAL 9006 RAL 9005
 Beam Angle MHT8830 15° 24° 38°
 Beam Angle MHT8831 18° 30°
 CCT 2700K 3000K 4000K
 CRI 80 90

SOURCE OPTION

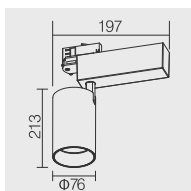
EVERCORE / Bridgelux

DRIVER OPTION

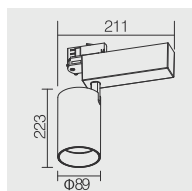
TRIDONIC / LIFUD / AREEK

REFERENCE DRAWING

MHT8830



MHT8831

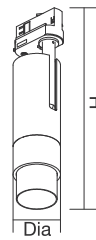


TRACK LIGHT



ZOOMER FAMILY TILTABLE & ROTATABLE ZOOMER TRACK LIGHT

TECH. DRAWING



ZOOMER FAMILY

LED	⊕	100-240 V	IP20	MHT8837 Bridgelux	MHT8847 CITIZEN	AREEK
-----	---	-----------	------	----------------------	--------------------	-------

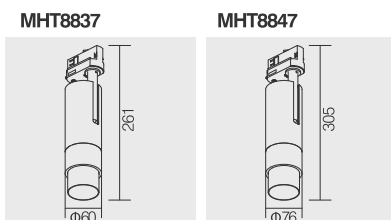
	W	LUM	CCT	BEAM	CRI	DIA	H
MHT8837	15	360-530	3000K	8-45°	80	Φ60mm	261mm
MHT8847	30	1150-2250	3000K	18-55°	80	Φ76mm	305mm

OPTIONS

Color	<input type="radio"/> RAL 9016	<input type="radio"/> RAL 9006	<input type="radio"/> RAL 9005
CCT	<input type="radio"/> 2700K	<input type="radio"/> 3000K	<input type="radio"/> 4000K
CRI	<input type="radio"/> 80	<input type="radio"/> 90	

MHT8837 SOURCE OPTION	OSRAM
MHT8847 SOURCE OPTION	Bridgelux
DRIVER OPTION	OSRAM / TRIDONIC / TCI

REFERENCE DRAWING



TRACK LIGHT



LED  100-240 V IP20 CREE AREEK

	W	LUM	CCT	BEAM	CRI
MHT8841	8	509	3000K	4°	80

EXTREM NARROW BEAM ANGLE TILTABLE & ROTATABLE TRACK LIGHT

OPTIONS

Color	<input type="radio"/> RAL 9016	<input type="radio"/> RAL 9006	<input type="radio"/> RAL 9005
CCT	<input type="radio"/> 2700K	<input type="radio"/> 3000K	<input type="radio"/> 4000K
CRI	<input type="radio"/> 80	<input type="radio"/> 90	

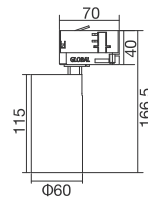
SOURCE OPTION

/

DRIVER OPTION

HEP / KEGU

TECH. DRAWING size in mm



LED  100-240 V IP20 CITIZEN AREEK

	W	LUM	CCT	BEAM	CRI
MHT8841A	12	913	3000K	25°	80

EXTREM NARROW BEAM ANGLE TILTABLE & ROTATABLE TRACK LIGHT

OPTIONS

Color	<input type="radio"/> RAL 9016	<input type="radio"/> RAL 9006	<input type="radio"/> RAL 9005	
Beam Angle	<input type="radio"/> 15°	<input type="radio"/> 25°	<input type="radio"/> 38°	<input type="radio"/> 60°
CCT	<input type="radio"/> 2700K	<input type="radio"/> 3000K	<input type="radio"/> 4000K	
CRI	<input type="radio"/> 80	<input type="radio"/> 90		

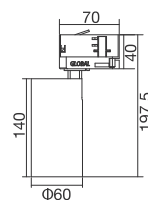
SOURCE OPTION

Bridgelux

DRIVER OPTION

TRIDONIC / HEP

TECH. DRAWING size in mm



TRACK LIGHT



LED  220-240 V IP20 Bridgelux GLOBAL

	W	LUM	CCT	BEAM	CRI
MHT8846	12	1080	3000K	36°	80

MULTIS SQUARE FAMILY

For 3 phase track with integrated adapter driver

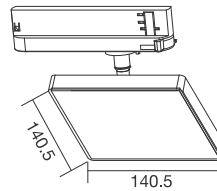
OPTIONS

Color	<input type="radio"/> RAL 9016	<input type="radio"/> RAL 9006	<input type="radio"/> RAL 9005
Beam Angle	<input type="radio"/> 15°	<input type="radio"/> 24°	<input type="radio"/> 36°
CCT	<input type="radio"/> 2700K	<input type="radio"/> 3000K	<input type="radio"/> 4000K
CRI	<input type="radio"/> 80	<input type="radio"/> 90	

SOURCE OPTION OSRAM

DRIVER OPTION PHILIPS / OSRAM

TECH. DRAWING size in mm



LED  220-240 V IP20 Bridgelux GLOBAL

	W	LUM	CCT	BEAM	CRI
MHT8848	12	1080	3000K	36°	80

MULTIS ROUND FAMILY

For 3 phase track with integrated adapter driver

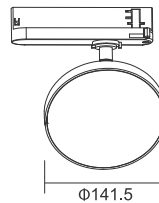
OPTIONS

Color	<input type="radio"/> RAL 9016	<input type="radio"/> RAL 9006	<input type="radio"/> RAL 9005
Beam Angle	<input type="radio"/> 15°	<input type="radio"/> 24°	<input type="radio"/> 36°
CCT	<input type="radio"/> 2700K	<input type="radio"/> 3000K	<input type="radio"/> 4000K
CRI	<input type="radio"/> 80	<input type="radio"/> 90	

SOURCE OPTION OSRAM

DRIVER OPTION PHILIPS / OSRAM

TECH. DRAWING size in mm



TRACK LIGHT



TAURUS FAMILY

For 3 phase track with integrated adapter driver

OPTIONS

Color	<input type="radio"/> RAL 9016	<input type="radio"/> RAL 9006	<input type="radio"/> RAL 9005
Beam Angle	<input type="radio"/> 15°	<input type="radio"/> 24°	<input type="radio"/> 38° <input type="radio"/> 55°
CCT	<input type="radio"/> 2700K	<input type="radio"/> 3000K	<input type="radio"/> 4000K
CRI	<input type="radio"/> 80	<input type="radio"/> 90	

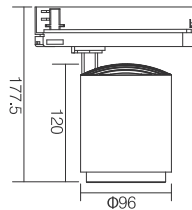
SOURCE OPTION OSRAM / CITIZEN / EVERCORE

DRIVER OPTION PHILIPS / OSRAM

LED  220-240 V IP20 Bridgelux GLOBAL

	W	LUM	CCT	BEAM	CRI
MHT8872	32	3000	3000K	38°	80

TECH. DRAWING size in mm



DRUM

TILTABLE & ROTATABLE TRACK LIGHT

OPTIONS

Color	<input type="radio"/> RAL 9016	<input type="radio"/> RAL 9006	<input type="radio"/> RAL 9005
Beam Angle	<input type="radio"/> 13°	<input type="radio"/> 24°	<input type="radio"/> 36°
CCT	<input type="radio"/> 2700K	<input type="radio"/> 3000K	<input type="radio"/> 4000K
CRI	<input type="radio"/> 80	<input type="radio"/> 90	

SOURCE OPTION /

DRIVER OPTION LIFUD / AREEK

LED  220-240 V IP20 CITIZEN OSRAM

	W	LUM	CCT	BEAM	CRI
MHT8575	47	3400	3000K	36°	80

TECH. DRAWING size in mm

